



Best Practices for 1 Year Follow-Up Survey Collection

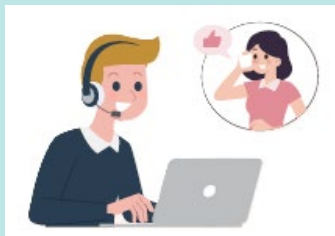
Providers speak to the patient at their visits regarding MBSC and discuss the importance of participation and filling out the surveys



Complete survey during 1-year in-person follow-up visit



Call patients to remind them to complete surveys



Send surveys through EHR (requires IT support)



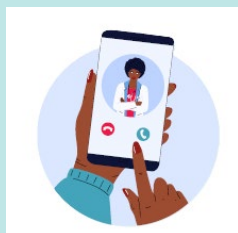
Add survey reminders to appointment notes



Run MBSC reports and follow up on missing surveys



Complete the survey virtually at a 9-month or 15-month visit if missed



Mail questionnaires with return envelope

